

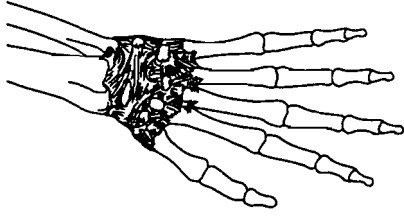
Every Organization has Four Primary Bones...

ARE YOU A BONE?

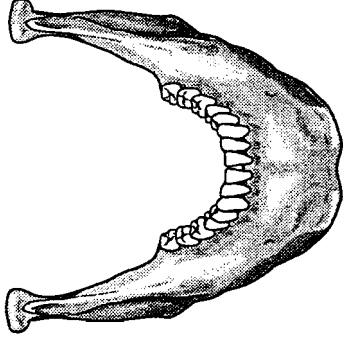
Back Bones
carry the bulk of
the load and do
most of the work.



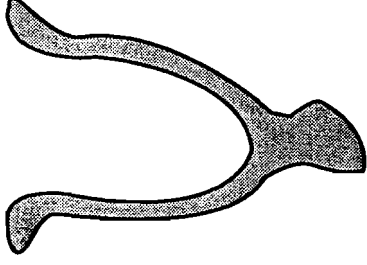
**Knuckle
Bones**
sit back and
knock everything.



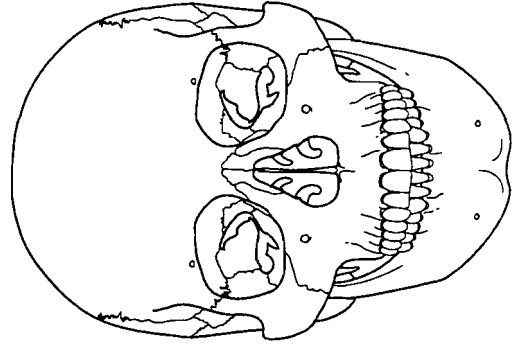
Jaw Bones
do a lot of
talking (and very
little else).



Wish Bones
wish someone would
do something.



...or a
bonehead?



BONE HEADS
like to “do it their way”
(show very little flexibility).